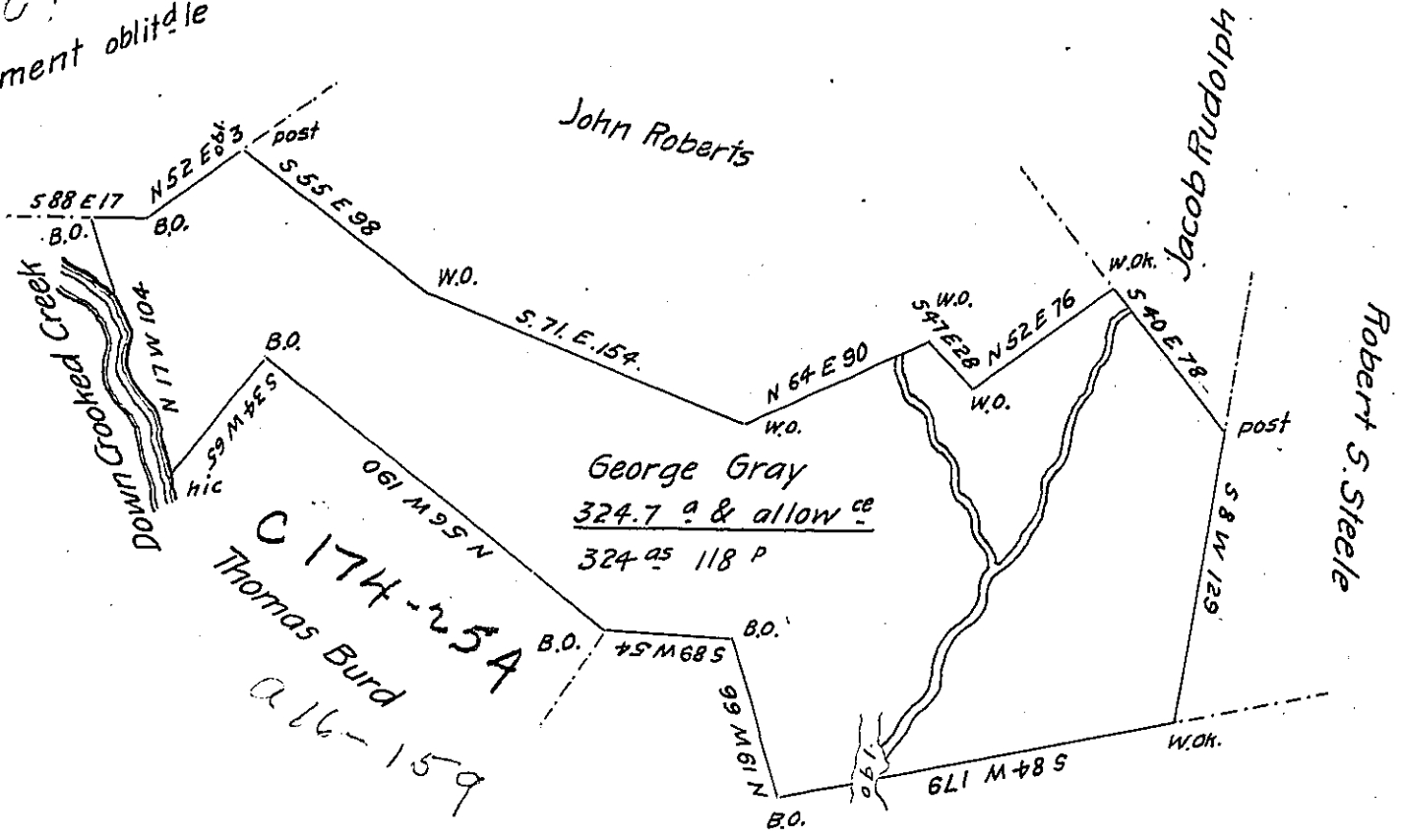


C 2-299
Clement obsolete



C 174-254
Thomas Burd
a 16-159

Michael Huffnagle
C 78-279

Survey'd to George Gray on the 8th day of May 1786 the above described tract of three hundred & twenty four acres & seven tenths of an acre and allowance of six P. Cent Situate on Crooked Creek which runs into the Allegany River between Kiskomenetas & Kittaning about two or three miles from the mouth of said Creek in Westmorland County. By warrant of the 16th day of Feb^y 1773

Joshua Elder D.S.

obl. In Lukens Esq. S. Gen!

IN TESTIMONY that the above is a copy of the original remaining on file in the Department of Internal Affairs of Pennsylvania, made conformably to an Act of Assembly approved the 16th day of February, 1833, I have hereunto set my Hand and caused the Seal of said Department to be affixed at Harrisburg, this thirtieth day of November 1904

Joseph P. Brown
Secretary of Internal Affairs.